

# Nebraska Music Teachers Association

## Sample Test 1A

### 1. Ear Training: Each example will be played two times.

A. Circle whether the pattern you hear goes up, goes down, or repeats. (1 pt each)

- |       |      |         |
|-------|------|---------|
| 1. Up | Down | Repeats |
| 2. Up | Down | Repeats |
| 3. Up | Down | Repeats |

B. Circle whether the sound you hear is a high, middle, or low sound. (1 pt each)

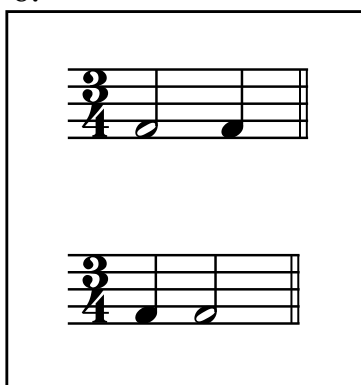
- |         |        |     |
|---------|--------|-----|
| 4. High | Middle | Low |
| 5. High | Middle | Low |

C. Circle whether the sound you hear is *forte* or *piano*. (1 pt each)

- |          |       |
|----------|-------|
| 6. Forte | Piano |
| 7. Forte | Piano |

D. Circle the rhythmic pattern you hear. (1 pt each)

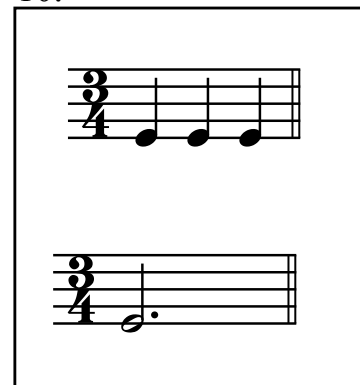
8.



9.



10.



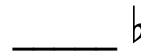
**Nebraska Music Teachers Association**  
**Sample Test 1A**

2. Match each term or symbol with the correct letter from the first column. (2 pts each)

A. Staccato Note



B. Half Note



C. Flat sign



D. Forte



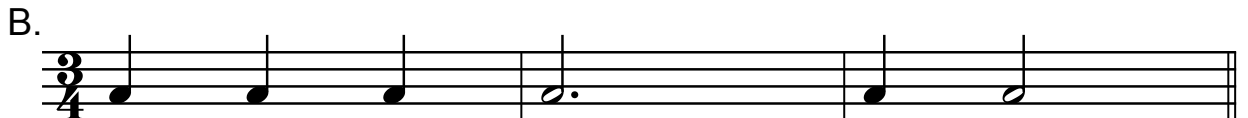
E. Treble Clef sign



3. Write the counting below the notes. (1 pt each measure)



Ex. 1 2 3 4 \_\_\_\_\_  
 or 1 2 3 1 \_\_\_\_\_

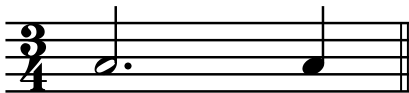
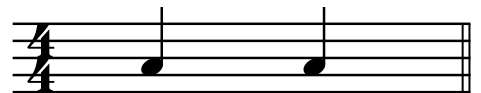


\_\_\_\_\_

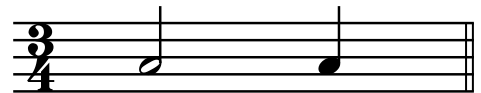
C. Circle the measure that has the correct number of counts for each pair.



**OR**






**OR**



**Nebraska Music Teachers Association**  
**Sample Test 1A**

4. A. Write how many counts each note would receive in a  $\frac{4}{4}$  time signature.  
 (2 pts each blank)

 = _____	 = _____	 = _____
---	---	---



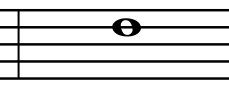

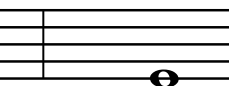
- B. In the time signature,  $\frac{4}{4}$  how many counts will be in each measure? (2 pts)

five                      two                      one                      four

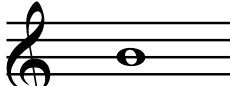
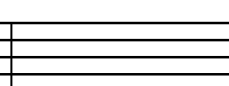



- C. In the time signature,  $\frac{3}{4}$  how many counts will be in each measure? (2 pts)

six                      nine                      three                      four

5. Circle the correct letter names of these notes in the **BASS CLEF** (2 pts each)

				
F C G	D E A	F B D	C G D	G C B

6. Write the letter names of these **TREBLE CLEF** notes. (2 pts each)

				
_____	_____	_____	_____	_____

7. Name all of your Festival pieces. (10 pts)

---



---

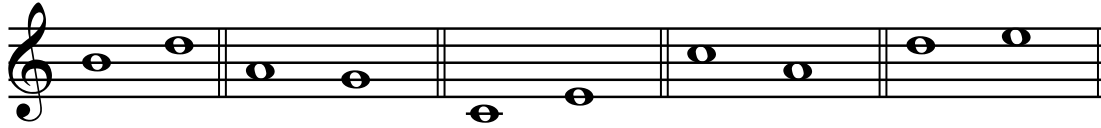


---

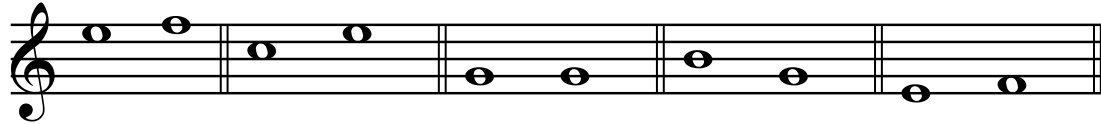
# Nebraska Music Teachers Association

## Sample Test 1A

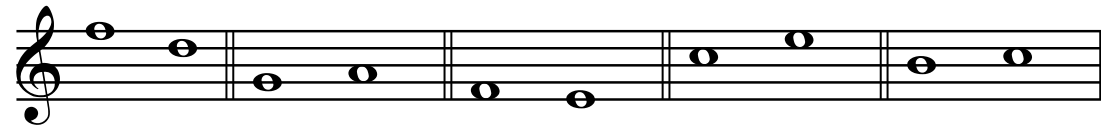
8. A. Circle the steps (2nds). (2 pts each)





- B. Circle the repeated notes. (2 pts each)



- C. Circle the skips (3rds). (2 pts each)



9. Circle the correct definition for each symbol or term

- A. *p*                      play softly                      play loudly
- B. interval                      the distance between 2 notes                      play loudly
- C.                       quarter note                      half note
- D.                       lower the note 1/2 step                      raise the note 1/2 step
- E. legato                      play smooth or connected                      play separated or detached

10. Write letter names to complete each sentence.

- A. From D, go down a skip to \_\_\_\_\_.
- B. From G, go up a step to \_\_\_\_\_.
- C. From F, go up a skip to \_\_\_\_\_.
- D. From E, go down a step to \_\_\_\_\_.
- E. From A, go up a step to \_\_\_\_\_.