

Nebraska Music Teachers Association  
Sample Test 1B

1. Ear Training. Each example will be played two times.

A. Circle whether the sound you hear is *legato* or *staccato*. (1 pt each)

1. Legato                      Staccato

2. Legato                      Staccato

B. Circle the three-note pitch pattern you hear. (1 pt each)



C. Circle the rhythmic pattern you hear. (1 pt each)



D. Circle whether the sound you hear is *forte* or *piano*. (1 pt each)

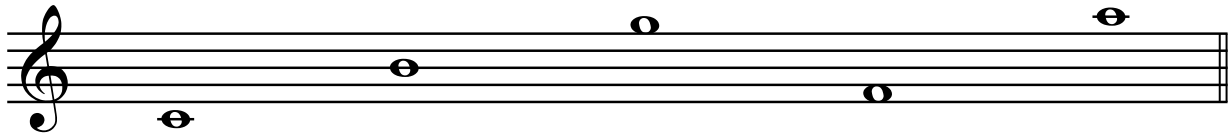
9. Forte                      Piano

10. Forte                      Piano

**Nebraska Music Teachers Association**  
**Sample Test 1B**

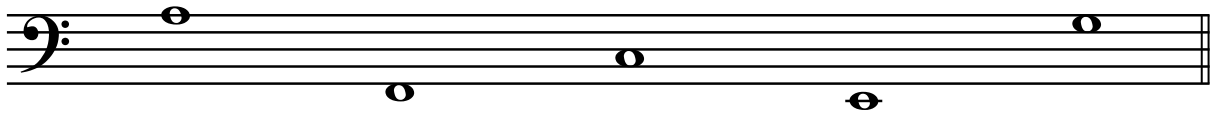
2. Notes

A. Circle the correct letter name for each of the notes. (1 pt each)



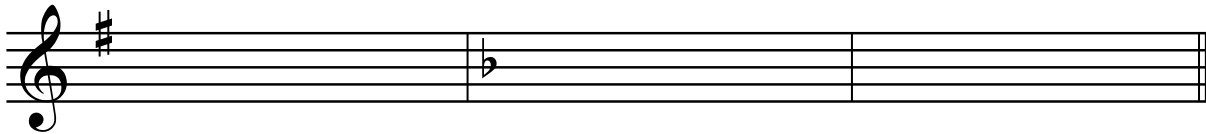
E G C      B F A      D G C      G E F      A B D

B. Write the letter name below each note. (1 pt each)



\_\_\_\_\_

3. Name these **Major** key signatures and circle the letter name of the flat or sharp. (2 pts each)



Key of \_\_\_\_\_

Key of \_\_\_\_\_

Key of \_\_\_\_\_

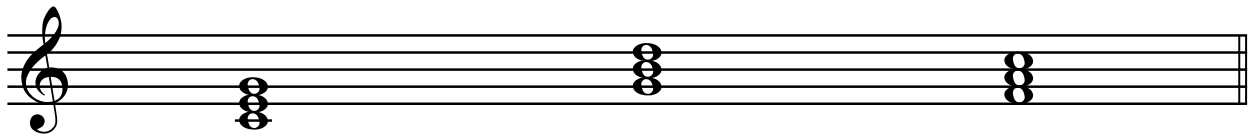
Circle the sharp used:

Circle the flat used:

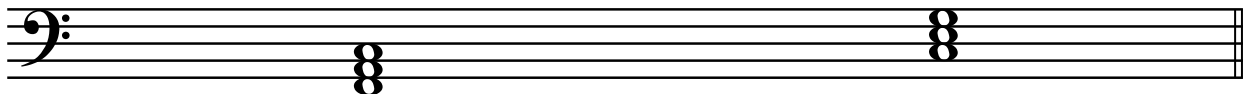
D# F# C#

Eb Gb Bb

4. Write the letter name of these triads. (2 pts each)



\_\_\_\_\_



\_\_\_\_\_

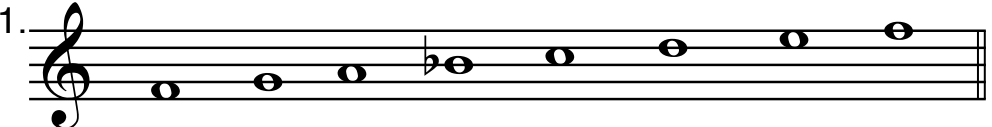
**Nebraska Music Teachers Association**  
**Sample Test 1B**

5. A. Circle or write in the correct type of step to complete the order for a major scale.  
 (1 pt each blank)

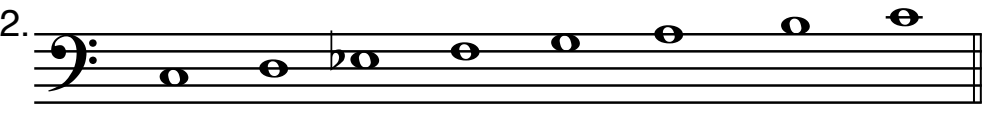
Whole - \_\_\_\_\_ - \_\_\_\_\_ - Whole - \_\_\_\_\_ - Whole - \_\_\_\_\_  
                     Half           Half                   Half           Half  
                     Whole       Whole               Whole       Whole

B. Write the number of each correctly written scale below. (2 pts each)

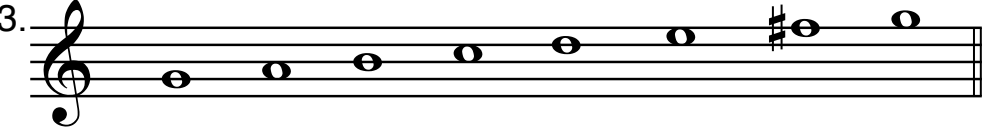
C Major \_\_\_\_\_

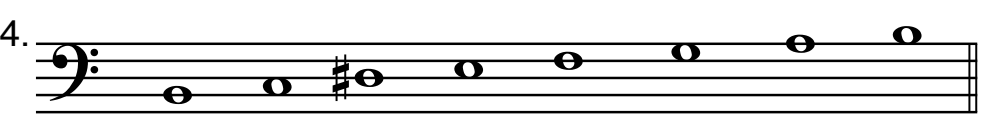
1. 


G Major \_\_\_\_\_

2. 

F major \_\_\_\_\_

3. 

4. 

5. 

6. Name all of your Festival pieces and their composers. (10 pts)

Solo \_\_\_\_\_ Composer \_\_\_\_\_

Solo \_\_\_\_\_ Composer \_\_\_\_\_

Solo \_\_\_\_\_ Composer \_\_\_\_\_

Solo \_\_\_\_\_ Composer \_\_\_\_\_

**Nebraska Music Teachers Association**  
**Sample Test 1B**

7. A. Circle whether the notes are a half step or whole step apart. (1 pt each)



Half  
Whole

Half  
Whole

Half  
Whole

Half  
Whole

Half  
Whole

B. Circle whether the notes are a 2nd, 3rd, 4th, or 5th apart. (1 pt each)

C down to A

F up to B

D up to E

A down to D

G up to B

2nd 3rd 4th

3rd 4th 5th

2nd 3rd 4th

3rd 4th 5th

2nd 3rd 4th

8. Match the symbol or term with the correct definition. (1 pt each)

A. rit.

\_\_\_\_\_ bass clef

B. #

\_\_\_\_\_ time signature

C.

\_\_\_\_\_ play loudly

D. *mp*

\_\_\_\_\_ gradually play slower

E.  $\frac{4}{4}$

\_\_\_\_\_ a triad

F. *f*

\_\_\_\_\_ to play smooth, connected

G.

\_\_\_\_\_ raise a note 1/2 step

H. *b*

\_\_\_\_\_ staccato

I.

\_\_\_\_\_ play medium soft

J. legato

\_\_\_\_\_ lowers a note 1/2 step

**Nebraska Music Teachers Association**  
**Sample Test 1B**

9. A. Time Signatures:

1. In the time signature  $\frac{3}{4}$  how many counts are in each measure?(1 pt) \_\_\_\_\_

2. In the time signature  $\text{C}$  how many counts are in each measure?(1 pt) \_\_\_\_\_

B. Circle the correct answer for each note or rest. (1 pt)




1.  this is a-      whole note      half note      quarter note

2.  this is a-      half note      eighth notes      quarter note

3.  this is a-      half rest      whole rest      quarter rest

4.  this is a-      quarter note      quarter rest      whole note

C. Write how many counts each note or rest receives in the  $\frac{4}{4}$  time signature.(1 pt)

\_\_\_\_\_      \_\_\_\_\_      \_\_\_\_\_      \_\_\_\_\_

10. Match the symbol or term in the first column with its meaning in the second column, by writing the correct letter in the blank. (1 pt each)

A.  \_\_\_\_\_ the end

B.  \_\_\_\_\_ the distance between two notes

C. common time \_\_\_\_\_ tied notes

D.  \_\_\_\_\_ play softly

E. fine \_\_\_\_\_ natural sign

F. *mf* \_\_\_\_\_ key signature

G.  \_\_\_\_\_ slur

H. interval \_\_\_\_\_ same as 4/4 time

I. *p* \_\_\_\_\_ play medium loud

J.  \_\_\_\_\_ treble clef