

# Nebraska Music Teachers Association

## Sample Test 2A

### 1. Ear Training

Each example will be played two times.

A. Circle whether the sound you hear is a whole step or a half step. (1 pt each)

1. Whole Step          Half Step

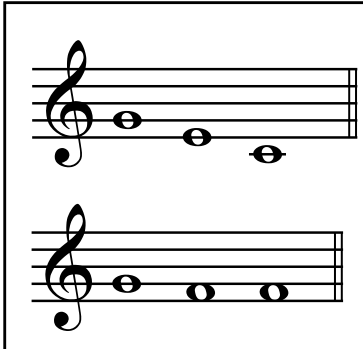
2. Whole Step          Half Step

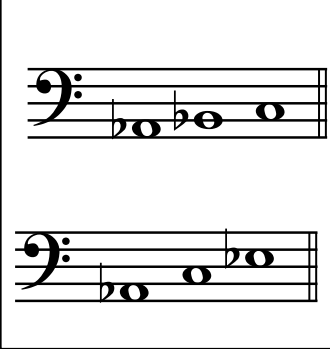
B. Circle whether the triad you hear is minor or major. (1 pt each)

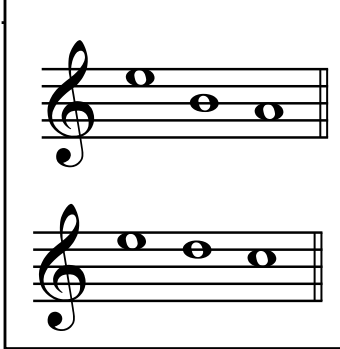
3. Minor                  Major

4. Minor                  Major

C. You will hear a three-note pitch pattern. Circle the pattern you hear. (1 pt each)


5. 

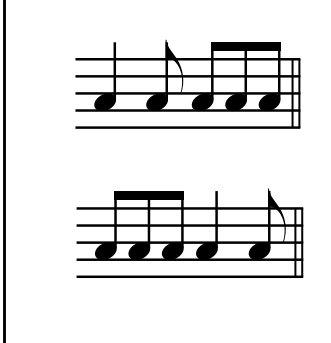
6. 

7. 

D. You will hear a rhythmic pattern. Circle the pattern you hear. (1 pt each)

8. 

9. 

10. 

# Nebraska Music Teachers Association Sample Test 2A

## Level 2A

### 2. Music History

A. Circle the Baroque composer in each pair. (1 pt each)

1. Handel                      Chopin
2. Beethoven                  Bach
3. Haydn                        Scarlatti

B. In each pair, circle the instrument used in the Baroque period. (1 pt each)

1. organ                        synthesizer
2. piano                        harpsichord
3. clavichord                  electric piano

C. Circle the dates of the Baroque period. (1 pt each)

- 1600 - 1750                      1820 - 1900                      1900- present day

D. In each pair, circle the word or phrase that more closely describes the music of the Baroque period. (1 pt each)

1. songlike melodies                      counterpoint
2. frequent ornamentation                  greater dynamic ranges
3. dances                                      clear and well defined forms

3. A. Name the scale degree number for each of the circled notes of these scales below:  
(1 pt each circled note)

The image shows two musical staves. The top staff is in bass clef and contains the notes G2, A2, B2, C3, D3, E3, F3, G3. The notes C3 and F3 are circled. Below the staff are two blank lines for answers. The bottom staff is in treble clef and contains the notes C4, D4, E4, F4, G4, A4, B4, C5. The notes C4, E4, and G4 are circled. Below the staff are three blank lines for answers.

# Nebraska Music Teachers Association Sample Test 2A

3. cont. B. Circle the correct type of step to complete the order for a major scale. (1 pt each blank)

\_\_\_\_\_ - Whole - Half - \_\_\_\_\_ - Whole - Whole - \_\_\_\_\_  
Half                      Half                      Half  
Whole                      Whole                      Whole

C. Circle the half steps in this major scale. (1 pt each correct half step)

C   D   E   F   G   A   B   C

4. For each interval in the left hand column, write its letter in the appropriate blank in the right hand column. (1 pt each)



\_\_\_\_\_ 5th



\_\_\_\_\_ 3rd



\_\_\_\_\_ 7th

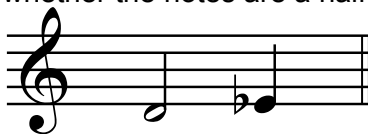


\_\_\_\_\_ 2nd



\_\_\_\_\_ 6th

B. Circle whether the notes are a half step or a whole step apart. (1 pt each)



Half step  
Whole step



Half step  
Whole step



Half step  
Whole step



Half step  
Whole step



Half step  
Whole step

# Nebraska Music Teachers Association

## Sample Test 2A

5. A. Add stems, flags, and beams to the notes below. Be sure to fill in the notes if needed. Flag and stem direction must be correct for credit. (1 pt each measure)

dotted half note
two eighth notes beamed
quarter note
single eighth note

- B. Write the rests in the correct place on the staff. (1 pt each)

half rest
quarter rest
eighth rest

- C. Write 3 whole notes on **B**, each one on a different line or space. (1 pt each)

6. A. Write these tempos in order from fastest to slowest. (1 pt each blank)

Adagio                  Moderato                  Allegro

Fastest \_\_\_\_\_ Slowest

- B. Circle whether the following statements are true or false. (1 pt each)

- |   |      |       |
|---|------|-------|
| In music, rit. means to gradually play faster.          | True | False |
| The key signature tells us how many beats in a measure. | True | False |
| This eighth note has a beam.                            | True | False |
| In music, D.C. means "the beginning".                   | True | False |
| Secondo is the lower part of a duet.                    | True | False |
| A phrase is a group of musically related songs.         | True | False |
| In music, decresc.. means to gradually play louder.     | True | False |

# Nebraska Music Teachers Association

## Sample Test 2A

7. Scales (2 pts per correct scale)

A. Write the letter names of these Major scales.

B. Write in the accidentals for each major scale, DO NOT use key signatures.

C. Circle the incorrect note/s for this major scale.

8. Name these triads by letter name and quality, major or minor. 2 pts each

_____	_____	_____	_____	_____
Major	Major	Major	Major	Major
minor	minor	minor	minor	minor

# Nebraska Music Teachers Association

## Sample Test 2A

9. A. Write one **REST** to complete each measure. (1 pt each)



B. Write one **NOTE** to complete each measure. (1 pt each)



C. Given the time signature of  $\frac{2}{4}$ , circle the correct answer below.

1. How many beats are in each measure?

6

4

2

2. What note gets **one** count?



10. Name the major, (MAJ), and minor, (min), key signatures. (1 pt each blank)



\_\_\_\_ MAJ

\_\_\_\_ MAJ

\_\_\_\_ MAJ

\_\_\_\_ MAJ

\_\_\_\_ MAJ

\_\_\_\_ min

\_\_\_\_ min

\_\_\_\_ min

\_\_\_\_ min

\_\_\_\_ min