

NMTA THEORY LEVEL 1A
Sample Test

1. Listening skills

Look at the answers before you begin the listening test.

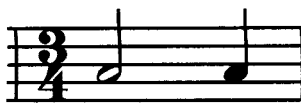
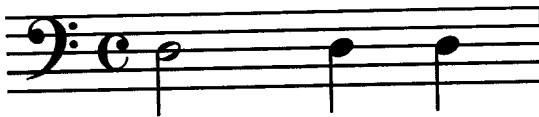
Part A: (2 points each)

You will hear a two-note pitch pattern. After each number, circle whether the pattern you hear is a second or a third or a repeat.

- 1) second third repeat
- 2) second third repeat
- 3) second third repeat
- 4) second third repeat
- 5) second third repeat

Part B: (2 points each)

You will hear a rhythm pattern. Circle the rhythm pattern you hear.
Each rhythm will be played two times.

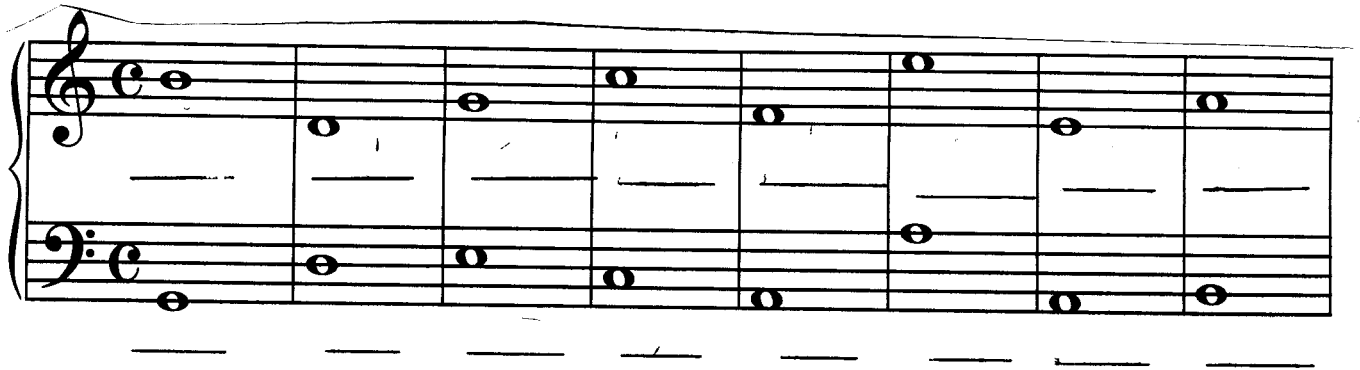


2. Music Reading and Writing Skills

Part A: (1 point each)

1. Note recognition

Write the names of these notes.



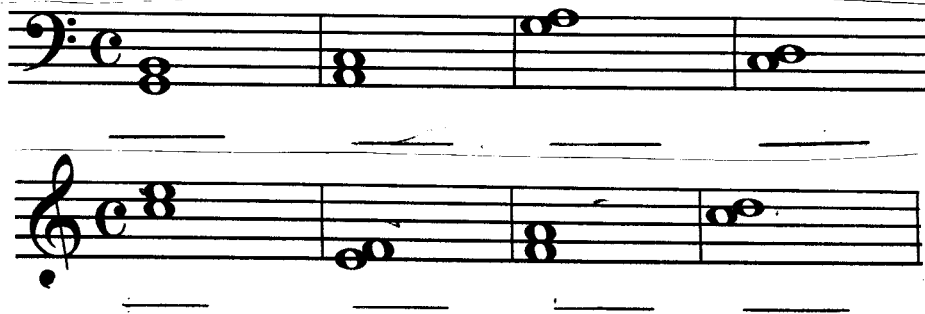
A musical staff with two staves (treble and bass clefs) in common time (C). The notes are as follows:

Staff	Measure 1	Measure 2	Measure 3	Measure 4	Measure 5	Measure 6	Measure 7
Treble	C4	D4	E4	F4	G4	A4	B4
Bass	C3	D3	E3	F3	G3	A3	B3

Below each staff are seven horizontal lines for writing the names of the notes.

Part B: (2 points each)

1. Write down whether these intervals are seconds or thirds. Write 2 for second and 3 for third.



Two musical staves (bass and treble clefs) in common time (C). Each staff contains four measures of intervals:

Staff	Measure 1	Measure 2	Measure 3	Measure 4
Bass	C3 to D3	E3 to F3	G3 to A3	B3 to C4
Treble	C4 to D4	E4 to F4	G4 to A4	B4 to C5

Below each staff are four horizontal lines for writing the interval names.

Part C: (1 point each)

1. Add bar lines to make correct measures for the time signature given.



2. Use the correct time signature in each measure.



3. Write these notes. Watch the clef signs.

C	G	F	B	D	A	E	

E D A C B G F

4. Write in the missing rest in each measure.



5. Write one note that is equal in value to each rest.



3. Definitions

Part A: Circle the correct answer (2 points each)

1. To play music *piano* means to:

- a. play loudly
- b. play softly
- c. play quickly
- d. play slowly

2. To play music *forte* means to:

- a. play softly
- b. play quickly
- c. play loudly
- d. play slowly

4. Intervals

Write the letter of musical alphabet below:

Stepping:

G _____ B

_____ D E

A B _____

F _____ A B

Skipping:

C _____ G

F _____ C

_____ F A

C E _____

Repeating:

C _____

D _____