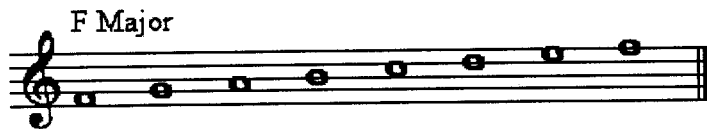


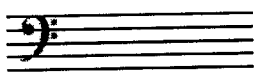
5. In the staff provided, complete each scale by writing in the missing accidental.



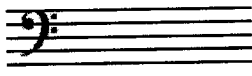
6. Match the term or symbol in the first column with its meaning in the second column.

- | | |
|------------------------|---------------------------|
| ___ <i>mezzo piano</i> | 1) Loud |
| ___ <i>cresc</i> | 2) Hold, pause |
| ___ <i>piano</i> | 3) Soft |
| ___ Allegro | 4) Slowly |
| ___ Fermata | 5) Getting louder |
| ___ <i>forte</i> | 6) Moderately loud |
| ___ rit | 7) A chord of three notes |
| ___ triad | 8) Quickly |
| ___ <i>mf</i> | 9) Moderately soft |
| ___ adagio | 10) Getting slower |

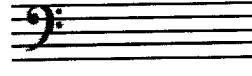
7. Write in the notes and rests in the correct position on, below, or above the staff.



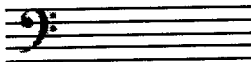
“C” half note on the staff



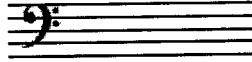
2 “Bs,” above the staff



Half note rest and four “E” eighth notes above the staff

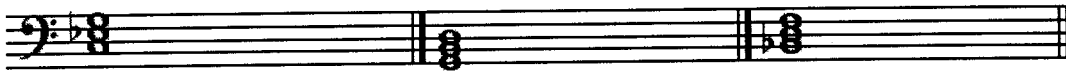


“C, E, D, F” quarter notes on the staff



Eighth note rest followed by three eighth notes on “D” above the staff

8. Name the Triads and scales in the spaces below using the correct letter name and symbol: “M” (Major) or “m” (minor).



9. **Part A** Sentence Completion: In the space provided, write the name of the Baroque composer.

_____ was one of the most famous German composers of the Baroque period. He was born in 1685 and died in 1750.

Domenico _____ was one of the greatest Italian composers and harpsichord performers of the Baroque Period. He composed more than 555 keyboard sonatas throughout his lifetime.

T / F The dates of the Baroque period are approximately 1600 – 1750.

T / F Two or more melodies played at the same time create a musical texture called counterpoint.

T / F Ornamentation was not used much in the Baroque Musical Time Period.

10. Number the scale degrees of the following E natural minor scale:

E	F#	G	A	B	C	D	E
1	___	3	___	5	___	___	___

11. T / F A phrase is always four measures.

12. Study this page before listening to the recording. Each example will be played twice.

A) Each Triad will be played twice. Circle whether the Triad is Major or minor.

1. Major minor 2. Major minor 3. Major minor

B) Each scale will be played twice, once ascending and once descending. Circle whether the scale is Major or minor.

1. Major minor 2. Major minor 3. Major minor

C) A two-measure melody will be played twice. Circle the melody played on the tape.



12. (Continued)

D) Circle the rhythm you hear.

Example 1

Three musical staves in 3/4 time. Each staff contains a sequence of eight quarter notes. The notes are: G4, A4, B4, C5, B4, A4, G4, F4.

Example 2

Three musical staves in 3/4 time. Each staff contains a sequence of eight quarter notes. The notes are: G4, A4, B4, C5, B4, A4, G4, F4.

E) Circle the pitch pattern you hear. Put a circle around number 1 2 or 3.

A single musical staff in treble clef with a key signature of one flat. It contains three measures of music. Each measure has four quarter notes. The notes are: G4, A4, B4, C5 in the first measure; G4, A4, B4, C5 in the second measure; G4, A4, B4, C5 in the third measure.