

NEBRASKA MUSIC TEACHERS ASSOCIATION
THEORY TEST-LEVEL 3A
Sample Test

NAME _____
INSTRUMENT _____
FESTIVAL NUMBER _____
TEACHER _____

1. Circle the interval that you hear: Major 3rd Perfect 5th Perfect 4th
2. Circle the scale you hear: Major natural minor
3. Circle the pitch pattern you hear:



4. Circle the rhythm pattern you hear:



Directions: Circle the melody you hear:



Directions: Write the correct beginning and ending year for each period of music history listed below:

Baroque _____ to _____

Classical _____ to _____

Romantic _____ to _____

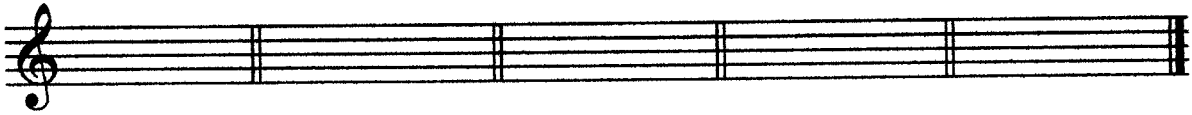
Directions: Match each term with the correct definition:

- | | |
|--------------------------|-------------------------------------|
| ___ 1. <i>ff</i> | A. slowly |
| ___ 2. <i>con</i> | B. return to first tempo |
| ___ 3. dominant | C. first scale degree, tonal center |
| ___ 4. tonic | D. sweetly |
| ___ 5. <i>da capo</i> | E. <i>fortissimo</i> , very loud |
| ___ 6. <i>poco</i> | F. fifth scale degree |
| ___ 7. <i>dolce</i> | G. with |
| ___ 8. <i>largo</i> | H. repeat from the beginning |
| ___ 9. <i>allegretto</i> | I. little |
| ___ 10. <i>a tempo</i> | J. lively |

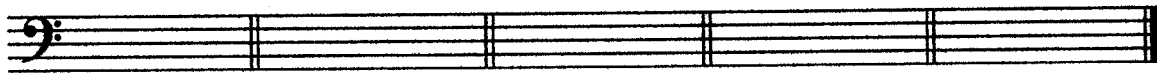
Directions: Circle the correct music history period for each composer:

Scarlatti	Baroque	Classical	Romantic
Schubert	Baroque	Classical	Romantic
Handel	Baroque	Classical	Romantic
Mozart	Baroque	Classical	Romantic
Chopin	Baroque	Classical	Romantic
Clementi	Baroque	Classical	Romantic
Schumann	Baroque	Classical	Romantic

Directions: Write the following key signatures:

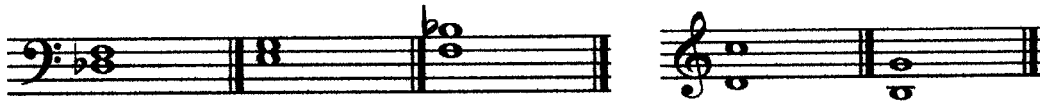


G Major b minor E Major f minor e minor

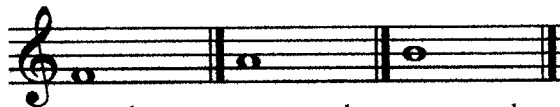


c# minor A Major Eb Major f# minor D Major

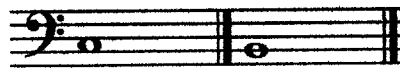
Directions: Identify each interval by name size and quality (major, minor, or perfect):



Directions: Complete each interval. The lower note is given:



Per. 5th min. 3rd Maj. 2nd



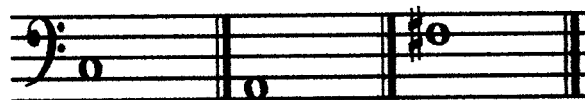
Maj. 6th Maj. 7th

Directions: Write the designated triad using the given root:



Bb Major

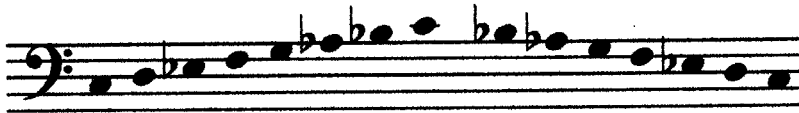
Eb Major
First inversion



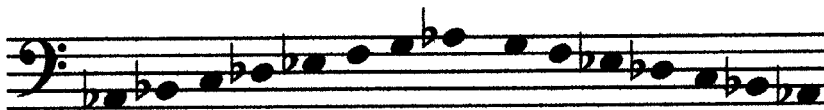
c minor A Major f# minor

Directions: Identify each scale by name (C) and quality (major or minor):











Directions: Add one note to complete the **incomplete** measure in each example:





Answer the following questions:

A. The note B \flat is enharmonic to which of the following?
 1. B \sharp 2. A \flat 3. A \sharp 4. C \flat

B. T / F Another name for two-part form is binary.

C. T / F Theme and Variations consist of a given melody followed by a number of modifications.

D. T / F A musical period is four phrases.

E. T / F A phrase may best be described as two periods.