

NEBRASKA MUSIC TEACHERS ASSOCIATION
Theory Test—Level 3B
Sample Test

Name _____
Instrument _____ Aud.# _____
Teacher _____

1. Ear Training Questions:

Study this page carefully before you listen to the recording.

Part A. After each number, circle the interval you hear. Each interval will be played two times.

- 1) min 2 Maj 2 min 7 Maj 7 2) Per 4 tritone Per 5 min 6

Part B. Two scales will be played. Circle the scale you hear. The scales will be played two times.

- 1) major natural minor harmonic minor
2) major natural minor harmonic minor

Part C. Circle the pattern you hear. The pattern will be played two times.



2. Write the requested **triads** on the given roots:

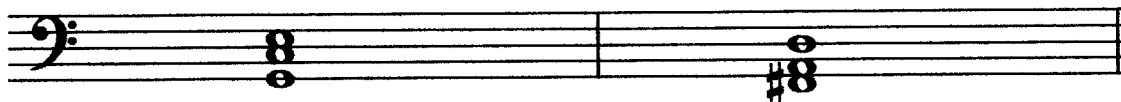


Major

minor

diminished

Circle whether each triad is in root position, first inversion, or second inversion:



root

first inv.

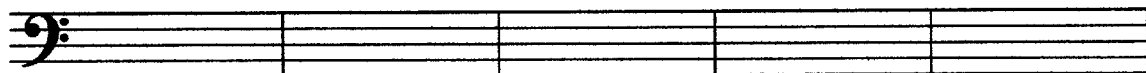
second inv.

root

first inv.

second inv.

3. Write the following key signatures:



E Major

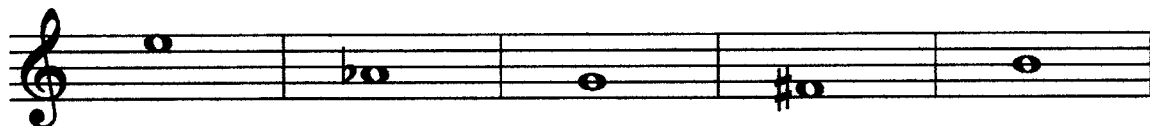
G minor

A Major

E minor

Db Major

4. Write the upper note to complete these intervals:



minor 2

Perfect 4

Major 7

diminished 5

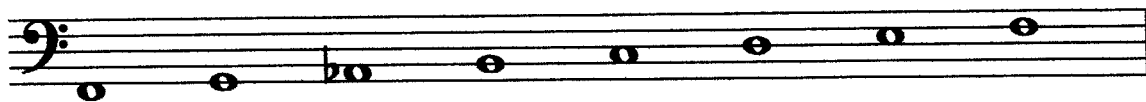
Major 3

5. Match the term in the first column with its meaning in the second column:

_____ *animato*
 _____ *cantabile*
 _____ *dal segno al fine*
 _____ *meno*
 _____ *piu*
 _____ *poco a poco*
 _____ *senza*
 _____ *sf*
 _____ *simile*
 _____ *vivace*

1. more
 2. repeat from sign to end
 3. suddenly loud
 4. animated
 5. without
 6. in a singing style
 7. in a similar manner
 8. less
 9. very fast
 10. little by little

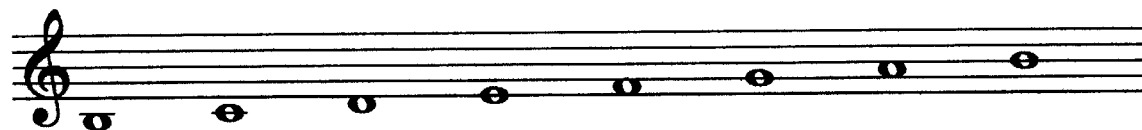
6. Add two accidentals (not key signatures) to each scale to make it correct:



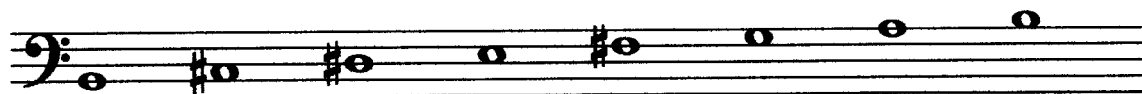
F harmonic minor



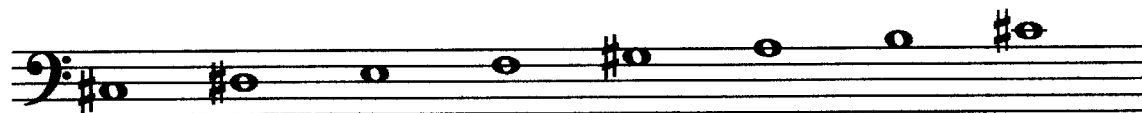
G natural minor



B natural minor



B Major



C# harmonic minor

7. Add one note to complete each measure:



8. Write the requested note (if minor, use harmonic minor):



subdominant
F Major

tonic
Db Major

dominant
C minor

subdominant
C# minor

dominant
B minor

9. Answer the following questions on form. (2 pts. each)

A. A musical period is:

1. four phrases 2. three phrases 3. two phrases 4. eight measures

B. Strophic form has:

1. one part 2. two parts 3. three parts 4. four parts

C. Another name for Two-part form is:

1. strophic 2. ternary 3. binary 4. rondo

D. True or False: Theme and Variations consist of a given melody followed by a number of modifications.

- TRUE FALSE.

D. Three-part form is labeled:

1. 1 2 3 2. A B C 3. A B A 4. chorus-verse-chorus

10. Matching questions on Music History. (1 pt. each)

A.

- | | | |
|------------------|-------|-----------------|
| Classical Period | _____ | 1. 1900-present |
| Modern Period | _____ | 2. 1750-1825 |
| Romantic Period | _____ | 3. 1600-1750 |
| Baroque Period | _____ | 4. 1825-1900 |

B.

- | | | |
|-----------------|-------|------------------|
| Modern Music | _____ | 1. Emotional |
| Baroque Music | _____ | 2. Dissonance |
| Romantic Music | _____ | 3. Ornamentation |
| Classical Music | _____ | 4. Balance |

C. Which of the following composers are from the Modern Period? Circle 2. (2 pts.)

- | | | | |
|----------|-----------|------------|-----------|
| Schubert | Czerny | Handel | Bach |
| Gershwin | Scarlatti | Mozart | Clementi |
| Schumann | Chopin | Kabalevsky | Beethoven |